



Pfaff is a proud supporter of **STITCHING FOR PINK**.

Join other embroiderers around the world to help raise funds and awareness of breast cancer, through embroidery. Join **STITCHING FOR PINK** by making a \$5 donation which will be given to the *National Breast Cancer Foundation*, and then start stitching! You will receive ten exclusive embroidery designs to stitch out on your own. **To sign up, visit: stitchingforpink.org.**



Making a Difference

By Marie Duncan

All it takes, sometimes, is a little something; to give courage and hope, and the little boost it takes to just hang on, when you are suffering from breast cancer.

Our wall hanging this month is designed for you to make, and give to a friend, acquaintance or to a local group, who will find a recipient in need. The words of hope and wisdom are printed on background printer fabric and the design of “sketchy” art flowers is embroidered over the printed background.

Our Summer Tote uses the July 2010 Monthly Design, #410601. It is free for the month of July, 2010 from

www.myembroideries.com. Click on the link, from the Free Design page on the Pfaff website and you will be ready to download it.

Feel the creative energy

Embroidery Machines

Sewing Machines

Overlock Machines

Punching Machine

Quilting

IDT

Embroidery Designs

Martha Stewart Embroidery Collections

Inspira

myembroideries.com

Free designs

Embroidery Clubs

Checkout 1) Review Billing Address ▶ 2) Apply Coupons ▶ 3) Credit Card Entry ▶ 4) Review & Submit Order

Apply Coupons

Please enter your coupon code, without any surrounding quotation marks. If your coupon code has spaces, please remember to include those as well. Once you have entered your coupon code, press the Apply Coupon button. Also, please verify that your discount has been applied at the right-hand side, before clicking on the Next button.

Subtotal:	\$20.00
Shipping:	\$0.00
Sales Tax:	\$0.00
Discounts/Coupons:	\$0.00
Total:	\$20.00
Credit Card Payments:	\$0.00

When you get to the Checkout, insert the coupon code FreeJul2010 in the box. Then click Apply Coupon.

After July 2010, the design will be available for purchase from www.myembroideries.com.

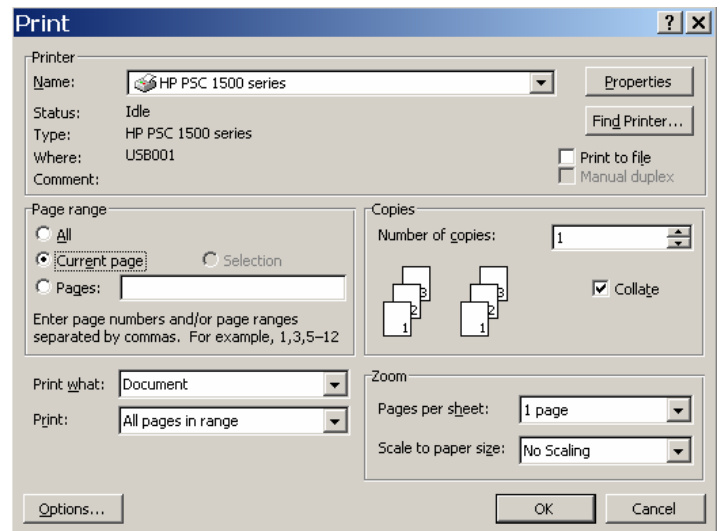
Sewing supplies:

- 40 wt. Robison Anton Rayon Embroidery Thread
- Bobbin Thread
- INSPIRA® Tear-A-Way Stabilizer
- 3/8 yard of Solid Pink Cotton
- 5/8 yard Pink Tone on Tone Cotton
- 1mm Cording for Piping
- Piping Hot Binding Tool #140 000 971
- Narrow Piping Foot # 820918096
- 1/4" Right Guide Foot w/IDT™ #820924096
- Fasturn Tube Turner #140000001
- 12" x 15" Cotton Batting
- 1/2" wide Steam-A-Seam 2
- One Button for Center of Flower
- Sew-on Button Foot # 820473096
 - One yard of 3/4" wide Ribbon
 - One 5/8" diameter Dowel
 - Two "head beads" to fit Dowel
 - Pink Acrylic Paint
 - Printer Fabric



Print the Background Fabric:

1. Place your printer fabric in the printer and bring up the page with the words.
2. When you choose "Print", choose "Current Page Only" as shown. You may want to test print on paper, before you print on your fabric.




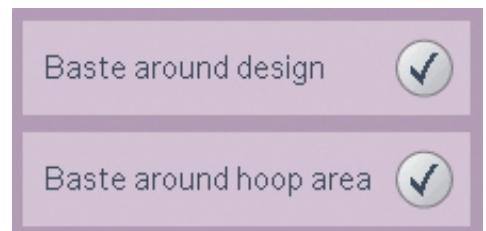
Embroider:

The design fits in the 240mm x 150mm hoop, but because needle holes sometimes show in printer fabric we will baste the exterior of the hoop instead of the design and use a larger hoop if possible.

1. Hoop one layer of INSPIRA® Tear-A-Way Stabilizer in your 200mm x 260mm hoop, if possible.



2. Long Touch  Baste and choose Baste around hoop area. By doing it this way, you will baste around the exterior of the printer fabric and not closer in around the design.
3. Remove the paper backing from your printed fabric.
4. Place your printed background on the stabilizer and baste in place.
5. Embroider the design.
6. Remove the basting and carefully tear off the stabilizer.



Cut:

From Tone on Tone Pink:

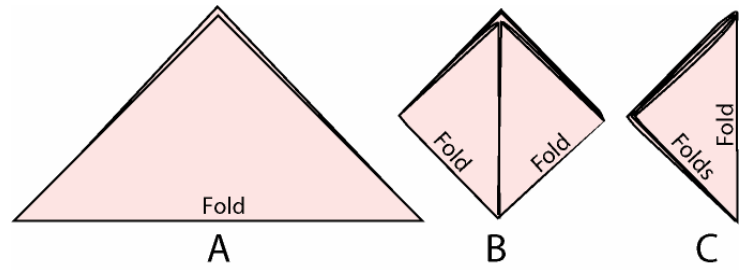
- Two Strips 2 1/2" x width of fabric for borders
- One piece 12" x 15" for backing

From Solid Pink:

- Three strips 1 1/2" x width of fabric for piping
- Five 5" x 5" squares

Make the Pink Ribbon Flower Petals:

1. Thread with sewing thread top and bobbin.
2. Fold into a triangle as shown (A).
3. Bring the bottom points to the top point as shown (B).
4. Fold the right point over to the left fold (C).



5. Stitch along the raw edges as shown.
6. Turn right side out. Set aside.

Make the Piping:

1. Sew the two 1 1/2" x width of fabric strips end to end to form one long strip. Press the seam open.
2. Snap on your Narrow Piping Foot.
3. Fold the fabric around the 1mm cord and stitch the piping.
4. Using your Piping Hot Binding Tool, trim the seam allowance to 1/4".

Finish your Wall Hanging:

1. With your Narrow Piping Foot still in place, stitch piping to the top and bottom of your printed, embroidered fabric.
2. Stitch piping to the two sides of your printed embroidered fabric. By not turning the corners, they will be nice and crisp and square.
3. Trim the selvage off of the strip of 2 1/2" x width of fabric and place it right sides together with the bottom of the piped embroidered fabric. Stitch in place.
4. Repeat for the top.
5. Repeat for the two sides.
6. Snap on your 1/4" Right Guide Foot w/IDT™.
7. From the remaining 2 1/2" strip of fabric, cut four pieces 5" x 2 1/2" for the hanging loops.
8. Fold right sides together, lengthwise to measure 5" x 1 1/4". Stitch using a 1/4" seam allowance.
9. Turn using your Fasturn Tube Turner.

10. Press with the seam in the center.
11. Pin, evenly spaced across the top, starting and ending 1/2" from the edges as shown.
12. Stitch the loops in place.
13. Stitch piping around the entire wall hanging.
14. Place the embroidered front right sides together with the backing fabric. Place on top of the batting and pin.
15. Snap on your Narrow Piping Foot. Stitch following the previous line of stitching around the outside leaving a 4" opening at the bottom for turning.



16. Trim the excess fabric and batting.
17. Turn and press
18. Insert Steam-A-Seam 2 into the opening and press with steam to fuse.
19. Snap on your 0A foot. Be sure your IDT is engaged.
20. Echo Quilt 1/4" from the edge of the embroidery. It is easy to follow the design if you keep the edge of the foot even with the embroidery.
21. Stitch in the ditch of the piping around the center rectangle.

22. Pin the five pink ribbon flower petals together to form a flower. Have the center of the flower in the lower left hand corner of the center rectangle as shown.



23. Stitch the petals in place, beginning in the center, about 1/4" from the tip. There are a lot of layers in the very tip of the flower, and it isn't necessary to get all the way to the end. The button will cover the center. Stitch out about an inch.



24. Snap on your Sew-on Button Foot.
25. Place the button in the center of the flower.
26. Stitch the Button in place.
27. Cut the dowel to 16" and glue the head beads to each end.
28. Paint with pink acrylic paint and allow to dry.

29. Insert the dowel in the hanging loops and tie on the pink ribbon.

Embroider a T-Shirt:

As a nice treat, embroider a t-shirt to give along with the wall hanging.

1. Fuse INSPIRA® Light & Soft Fuse-On Stabilizer (#140002983) to the inside of the t-shirt where you would like to put the embroidery. Be sure to mark the area to be embroidered with your Air Soluble Fabric Marking Pen because once it is “inside out” and you are trying to hoop it, it becomes confusing.

2. Hoop two layers of Aqua-Magic Stabilizer (#140000667). Bring up the design and place your T-Shirt on the hooped stabilizer. Touch



and baste the T-Shirt in place.

3. The design is not stitch intensive at all, except for the pink ribbon portion. During color 2, place Inspira No Show Mesh (#140000936) underneath the hooped T-shirt. When color 2 is done, skip ahead to color 6. This completes the ribbon.

4. Remove the hoop from the machine and trim the No Show Mesh as closely as you can to the stitching.

5. Now, stitch the remaining colors, 3, 4, 5 and 7. What this accomplishes is to have a permanent cut-away stabilizer underneath the wide satin stitches of the ribbon, but to have the entire stabilizer wash out of the remainder of the design where it is no longer needed. This maintains the soft feel of the T-shirt knit.



Cancer is a word, not a sentence. ~John Diamond My cancer scare changed my life. I'm grateful for every new, healthy day I have. It has helped me prioritize my life. ~Olivia Newton-John Feed your faith and your fears will starve to death. ~Author Unknown Attitude is a little thing that makes a big difference. ~Winston Churchill Some days there won't be a song in your heart. Sing anyway. ~Emory Austin The human spirit is stronger than anything that can happen to it. ~C.C. Scott I don't think of all the misery but of the beauty that still remains. ~Anne Frank Never, never, never give up. ~Winston Churchill Do not be afraid of tomorrow; for God is already there. ~Author Unknown If you're going through hell, keep going. ~Winston Churchill Cancer is a word, not a sentence. ~John Diamond My cancer scare changed my life. I'm grateful for every new, healthy day I have. It has helped me prioritize my life. ~Olivia Newton-John Feed your faith and your fears will starve to death. ~Author Unknown Attitude is a little thing that makes a big difference. ~Winston Churchill Some days there won't be a song in your heart. Sing anyway. ~Emory Austin The human spirit is stronger than anything that can happen to it. ~C.C. Scott I don't think of all the misery but of the beauty that still remains. ~Anne Frank Never, never, never give up. ~Winston Churchill Do not be afraid of tomorrow; for God is already there. ~Author Unknown If you're going through hell, keep going. ~Winston Churchill Cancer is a word, not a sentence. ~John Diamond My cancer scare changed my life. I'm grateful for every new, healthy day I have. It has helped me prioritize my life. ~Olivia Newton-John Feed your faith and your fears will starve to death. ~Author Unknown Attitude is a little thing that makes a big difference. ~Winston Churchill Some days there won't be a song in your heart. Sing anyway. ~Emory Austin The human spirit is stronger than anything that can