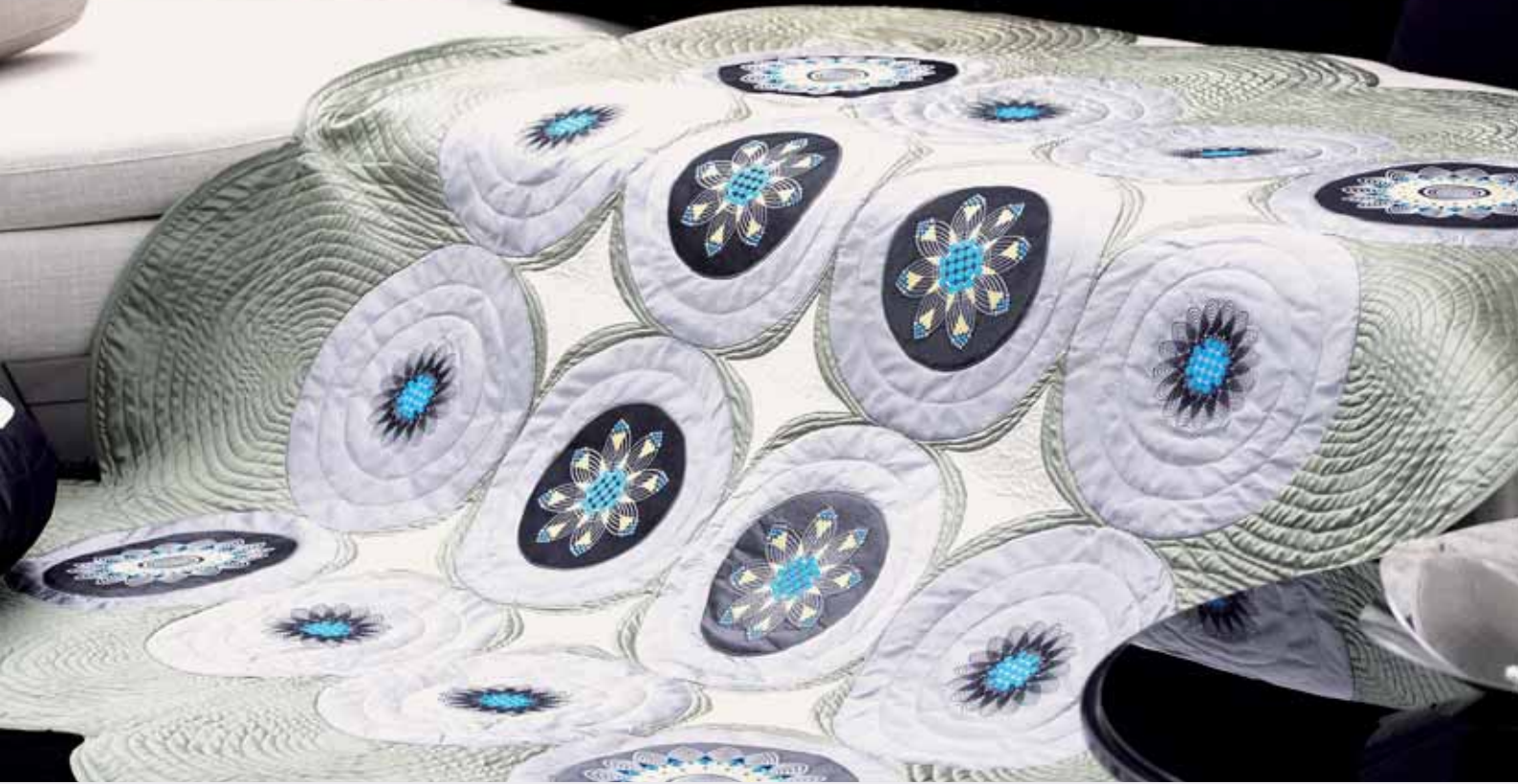


Creative Vision Quilt



Supplies:

2 yds (1.8 m) Light Grey silk for large circles

1 ¼ yds (1.2 m) Dark Grey silk for medium and small circles

½ yd (0.5 m) Beige silk for diamonds

4 yds (3.6 m) Green silk for Background and Binding

4 yds (3.6 m) Grey silk for Backing

68" x 68" Cotton Batting

Diamond template

Dritz Quilter's See-Thru Drafting Ruler (optional)

Lightweight fusible web

Tear away stabilizer

Sulky Totally Stable stabilizer

Sewing thread

Rayon thread for embroidery and quilting

Bobbin thread

Open-Toe Appliqué Foot, 9mm with IDT 820213-096

¼" Quilting foot 820211-096

Rotary cutter, ruler, mat

Compass

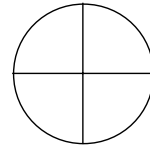
Water soluble marker

Safety pins for basting quilt together

1 Cutting Instructions:

Template plastic

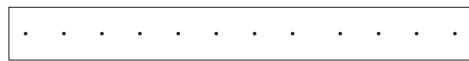
- 1 – 12" (30.5 cm) circle
- 1 – 9" (23 cm) circle
- 1 – 7" (18 cm) circle



Note: use compass to draw the circles and draw the center cross hair on each circle
1 – Diamond template (see last page)



1 – 2" x 18" (5 x 30 cm) rectangle with holes punched down the center every 1/2" (12 mm)
Make this template only if you don't have the Dritz Quilter's See-Thru Drafting Ruler



Light Grey Silk

- 8 – 14" (35 cm) squares
- 8 – 13" (33 cm) squares

Dark Grey Silk

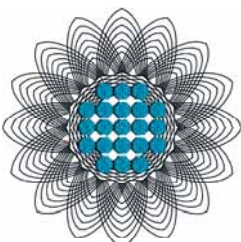
- 4 – 16" (40 cm) squares
- 4 – 10" (25.5 cm) squares

Green Silk

- 2 – 68" x 55" (175 x 140 cm)

2 Assembly Instructions:

1. Center a 14" (35 cm) light grey silk square with stabilizer in an embroidery hoop and embroider the small design.



with stabilizer in an embroidery hoop and embroider the large design.



2. Repeat for a total of 8 embroideries. Remove the stabilizer.

3. Fuse a 13" (33 cm) square of fusible web on to the wrong side of each of the embroidered squares.

4. Center the 12" (30.5 cm) circle on top of the embroidered square and cut out the circle. Repeat for all 8 embroidered squares.

5. Center a 16" (40 cm) dark grey square

6. Repeat for a total of 4 embroideries. Remove the stabilizer.

7. Fuse a 12" (30.5 cm) square of fusible web on to the wrong side of each of the embroidered squares.

8. Center the 9" (23 cm) circle on top of the embroidered square and cut out the circle. Repeat for all 4 embroidered squares.

9. Center a 10" (25.5 cm) dark grey square

with stabilizer in an embroidery hoop and embroider the medium design.



10. Repeat for a total of 4 embroideries. Remove the stabilizer.

11. Fuse a 9" (23 cm) square of fusible web on to the wrong side of each of the embroidered squares.

12. Center the 7" (18 cm) circle on top of the embroidered square and cut out the circle. Repeat for all 4 embroidered squares.

13. Fuse a 13" (33 cm) square of fusible web on to the wrong side of each of the 13" (33 cm) light grey squares. For a total of 8 squares.

14. Thread your machine with dark grey rayon thread on top and bobbin thread on the bobbin and attach the open toe appliqué foot.

15. Remove the paper backing from the 9" (23 cm) dark grey embroidered circle. Center on the 13" (33 cm) light grey square and fuse in place. Leave the paper on the back of the square to stabilize while stitching.

16. Select a wide satin stitch and stitch around the dark grey circle. Repeat for all 4 circles.

17. Center the 12" (30.5 cm) circle on top of the square with the circle appliquéd on top and cut out the circle. Repeat for all 4 squares.

18. Remove the paper backing from the 7" (18 cm) dark grey embroidered circle. Center on the 13" (33 cm) light grey square and fuse in place. Leave the paper on the back of the square to stabilize while stitching.

19. Select a wide satin stitch and stitch around the dark grey circle. Repeat for all 4 circles.

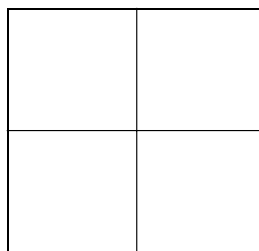
20. Center the 12" (30.5 cm) circle on top of the square with the circle appliquéd on top and cut out the circle. Repeat for all 4 squares.

21. Thread your machine with sewing thread on top and bottom. Attach the ¼" Quilting foot.

22. Stitch together the two 68" x 55" (175 x 140 cm) green silk pieces, press the seam open.

23. Cut the piece to measure a 68" (175 cm) square. Set the remaining piece aside for the bias binding.

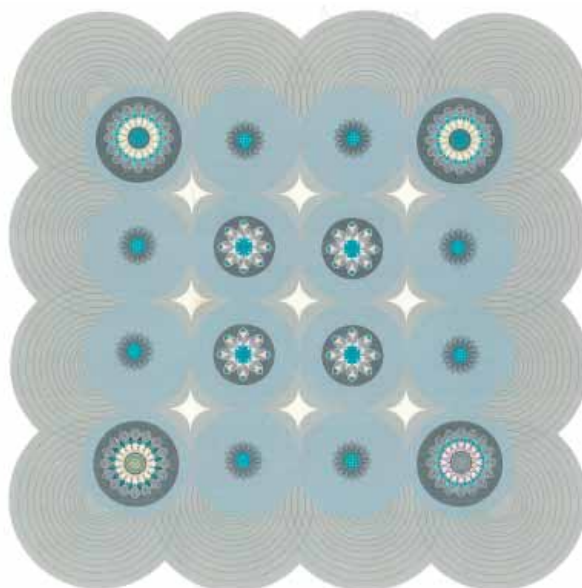
24. Draw a line down the center of the fabric



to use for placing the circles on the quilt.

25. Remove the paper backing from all of the circles.

26. Fuse the circles in place according the



layout design.

27. Thread your machine with light grey rayon thread on top and bobbin thread on the bobbin. Attach the open toe appliqué foot.

28. Fuse Sulky Totally Stable stabilizer on the wrong side of the quilt, (tip: only fuse it under one circle at a time and remove after stitching is complete).

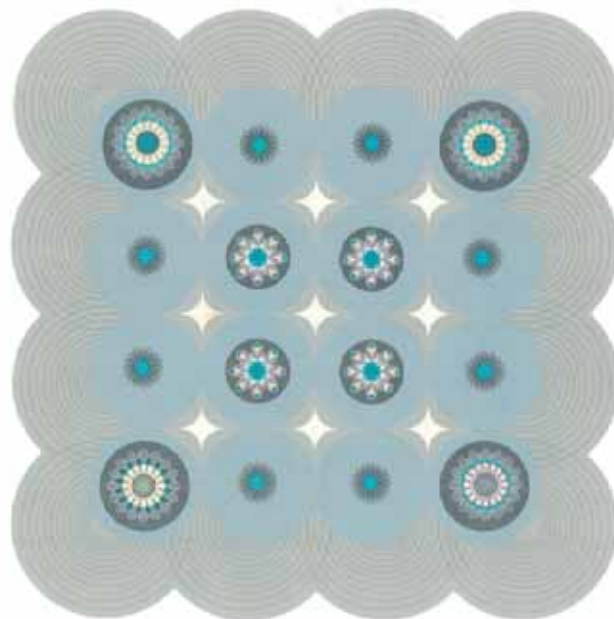
29. Select a wide satin stitch and stitch around the light grey circle. Repeat for all the circles.

30. Fuse fusible webbing to the wrong side of the beige silk and trace 9 diamonds using the template. Cut out the diamonds.

31. Remove the paper backing and fuse in place on the quilt. Thread with beige rayon thread. Fuse Sulky Totally Stable stabilizer on the wrong side of the quilt and satin stitch around each diamond. Remove the stabilizer.

32. With the water soluble marker draw your quilting lines. Around the small embroidery draw a 9" (23 cm) and 7" (18 cm) circle. Around the medium embroidery draw a 9" (23 cm) circle.

33. For the quilting designs around the perimeter of the quilt, use the Dritz Quilter's See-Thru Drafting Ruler (or if you don't have one use your rectangle template). Mark the center point of the top of each of the light grey circles with the small embroidery. Anchor your ruler with a tack or pin in the bottom hole of the ruler at the marked center point of the circle. Place the water soluble marker in the first hole and draw a circle by rotating the ruler like a compass. Repeat until you have 17 circles drawn. For the corners start drawing the circle starting at the hole #8 on the ruler which is the 4" (10 cm) mark. Continue to draw circles until you have 13 circles or as many as you wish to fill the corners of the quilt. Note: the Quilter's See-Thru Drafting Ruler does not have enough holes for the corner so you will have to draw in the remaining circles.



34. Thread your machine with sewing thread on top and bottom. Attach the ¼" Quilting foot.

35. Stitch together the two 68" x 55" (175 x 140 cm) silk pieces for the back, press the seam open.

36. Cut the piece to measure a 68" (175 cm) square.

37. Sandwich the quilt with the backing, batting and quilt top. Pin baste well.

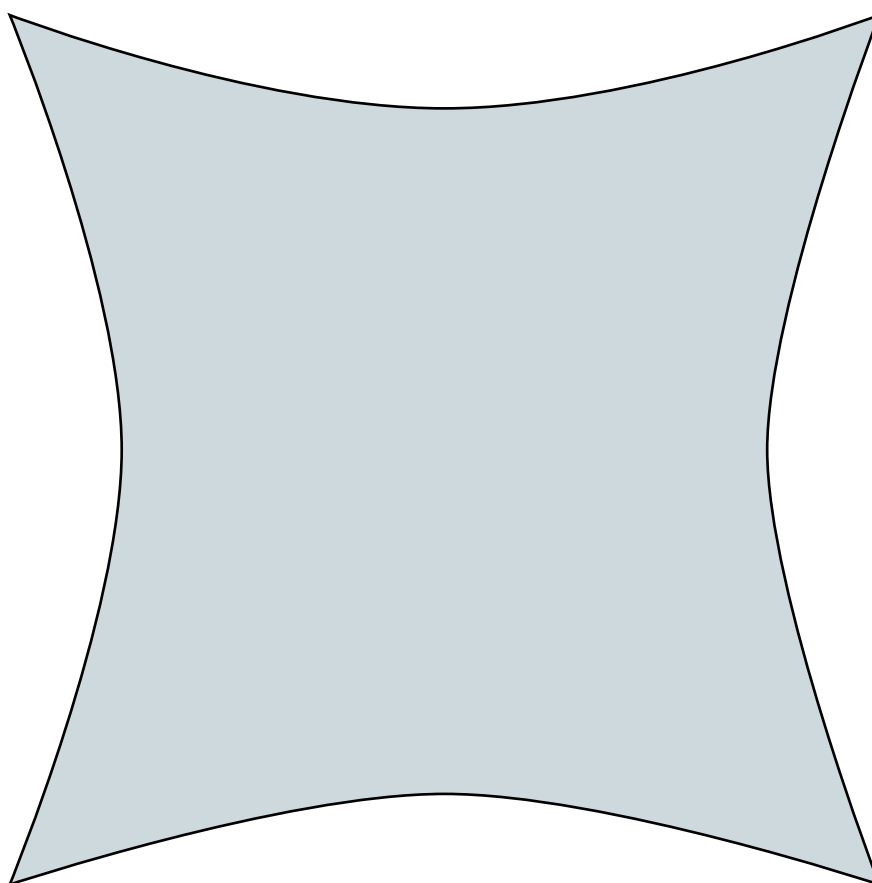
38. Quilt using rayon thread in the top and bobbin. Be sure to engage your IDT™ on your open toe appliqué foot.

39. Once you have completed the quilting, select a 3-step zig zag and stitch around the perimeter of the quilt, line up the last quilting line with the foot.

40. Trim the excess fabric and batting from the quilt.

41. Cut 2 ½" bias strips from the remaining piece of green silk. Piece together to form a strip that measures 400" (10.25 m). Press in half wrong side together. Bind the quilt.

Finished!



Diamond template